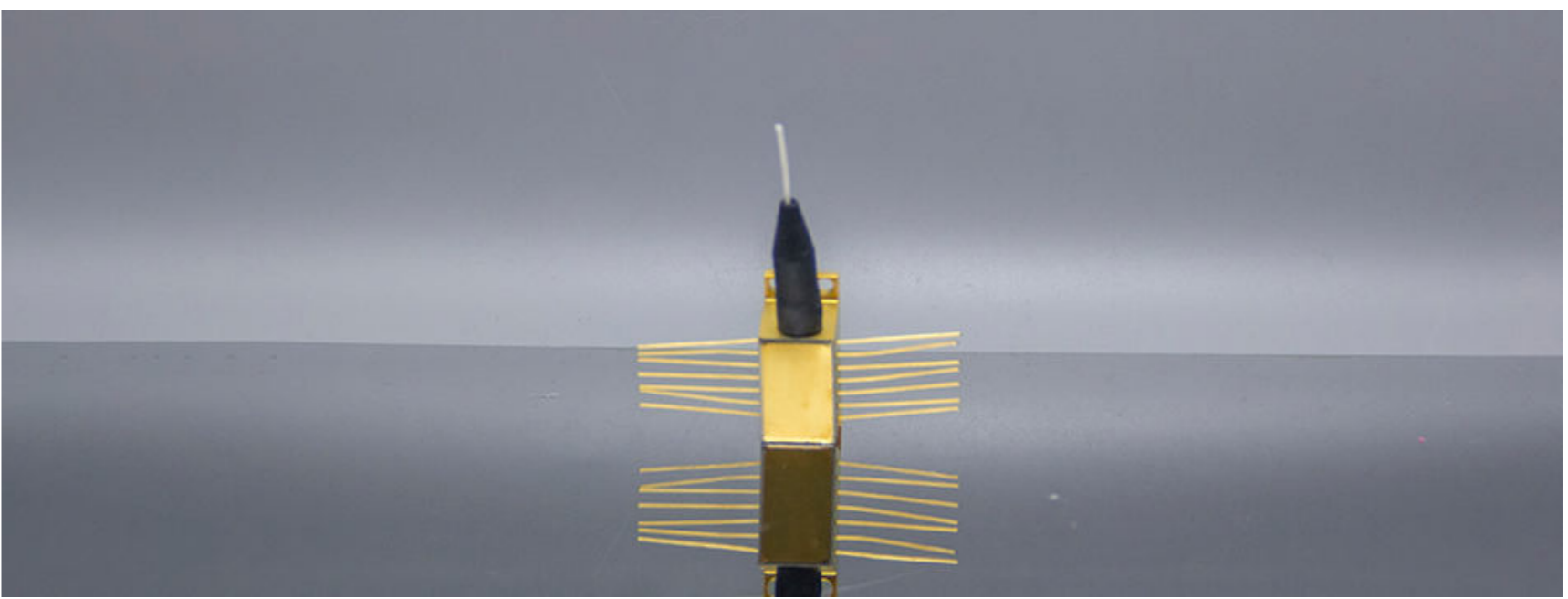
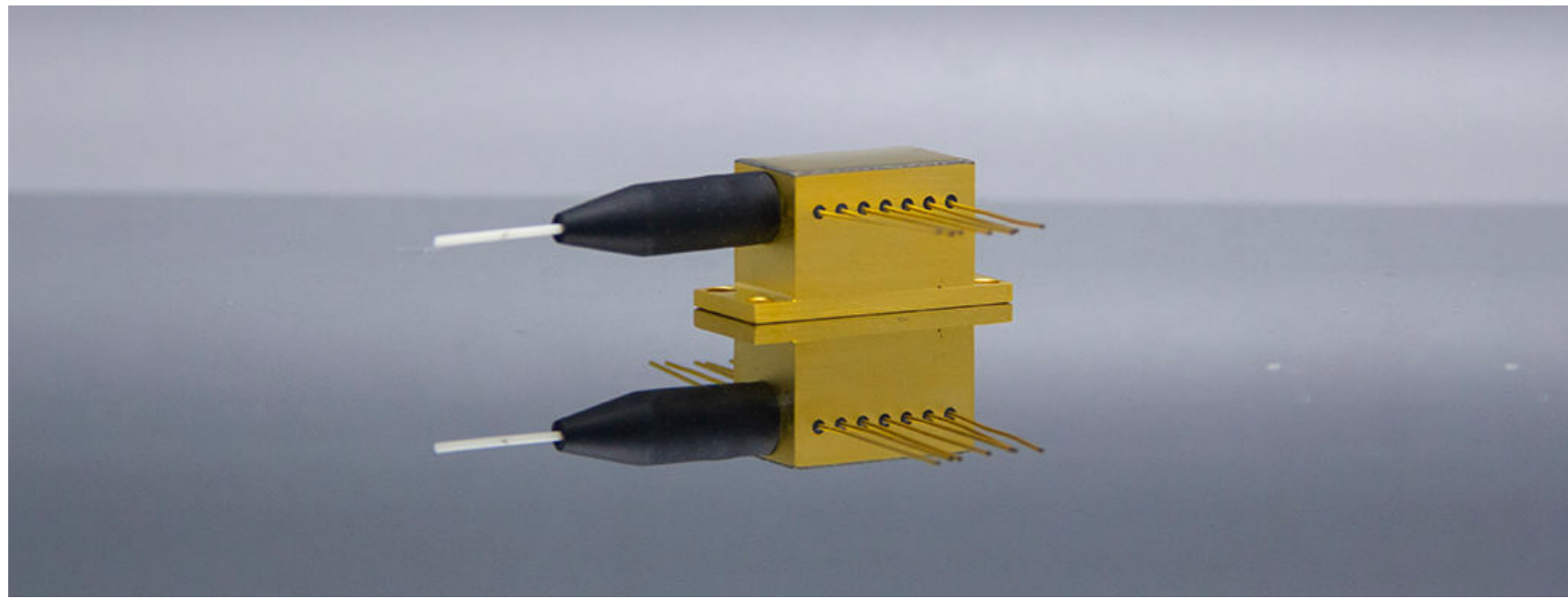
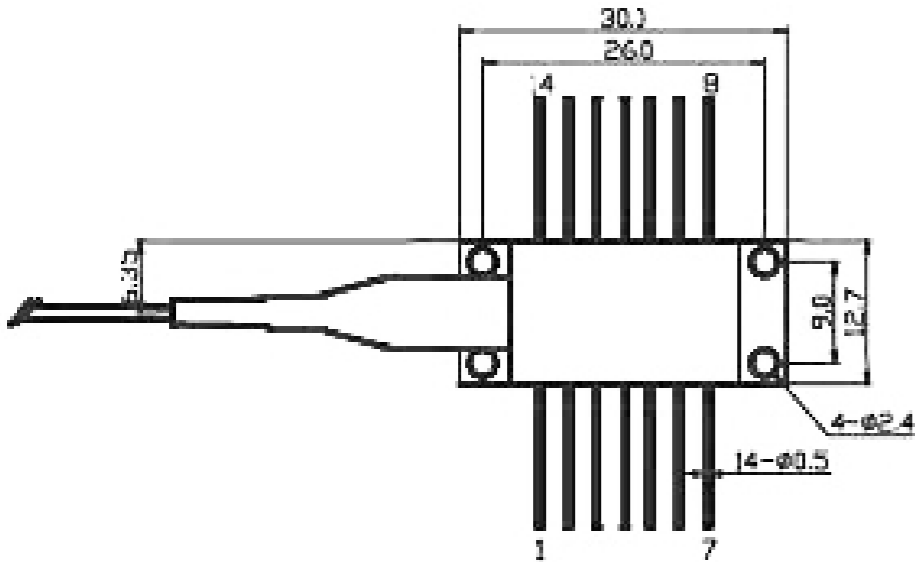
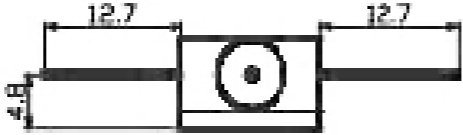
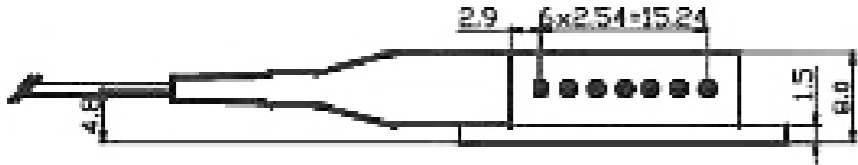


# 785nm Dual Wavelength And Narrow Linewidth Packaging Module of DWM Series



### OUTLINE SIZE(mm)



### FEATURES

- Output power: 600mW
- Wavelength: 785±0.5nm Lock wavelength
- Fiber core diameter: 105 μm
- Numerical aperture: 0.22NA
- Current locking range: 0.3-1.4A
- Temperature locking range: 15-35 C

### APPLICATION

- Research applications
- Spectrum detection

Pin	Features	Pin	Features
1	TEC(+)	8	--
2	Thermistor	9	--
3	PD(P)	10	Laser (+)
4	PD(N)	11	Laser (-)
5	Thermistor	12	--
6	--	13	Shell
7	--	14	TEC(-)



## PARAMETERS

Mode	CL784785-0.5-600600mW-DWM001	CL785/830-0.5-600/600mW-DWM002	CL785/1064-0.5-600/600mW-DWM003			
Optical Parameter	Continuous Output Power (mW)	600 (Each wavelength)				
	Center Wavelength (nm)	784/785	785 830 1064			
	Spectral Width (nm)	<0.1	<0.1	<0.1		
	Characteristics of Wavelength With Temperature (nm/°C)	0.01	0.01	0.01		
Electrical Parameter	Threshold Current (A)	0.4	0.4	0.4	0.2	
	Operating Current (A)	1.2	1.2	1.2	1.3	
	Operating Voltage (V)	2	2	1.8	2	1.8
	Differential Efficiency (W/A)	0.7	0.7	0.8	0.7	0.5
	PD Current (μA)	<2000				
	Thermistor Parameters (kΩ/β(25°C))	10±5%/3450				
	TEC Maximum Current (A)	2.2				
	TEC Maximum Voltage (V)	8.7				
Optical Fiber Parameter	Fiber Diameter (μm)	105				
	Fiber Cladding Diameter (μm)	125				
	Fiber Coating Diameter (μm)	250				
	Numerical Aperture	0.22				
	Fiber Length	100±10 (Other lengths can be customized)				
	Connector	FC/PC, ST, SMA905				
Other Parameter	Operating Temperature (°C)	10-30				
	Operating Relative Humidity (%)	75				
	Storage Temperature (°C)	-20~70				
	Storage Relative Humidity (%)	90				
	Pin Soldering Temperature, Max (°C)	250(10 Sec.)				

