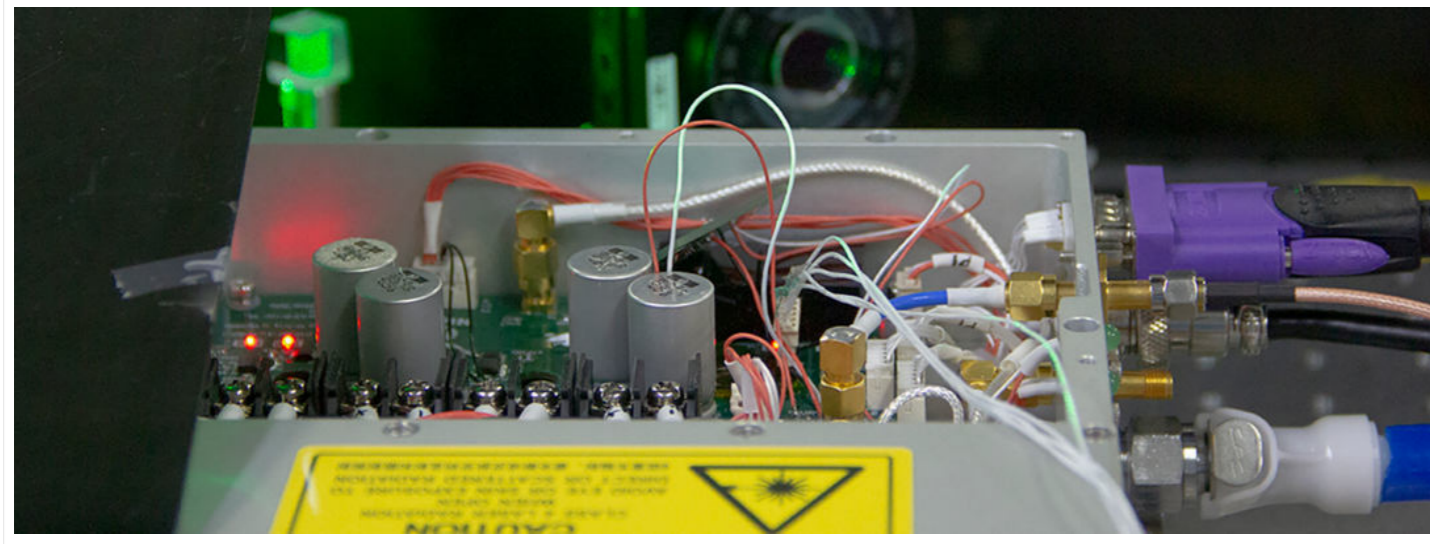


532nm Single Frequency Pulsed Laser



DESCRIPTION

The single frequency series laser includes single frequency continuous seed source, single frequency continuous amplification + frequency multiplier, single frequency high energy solid-state laser. Based on the non planar ring cavity technology, resonance detection technology, external cavity resonance frequency doubling technology and other engineering technology, the full parameter multi band laser product coverage from narrow linewidth seed source, excitation amplification to nonlinear frequency conversion is realized. By means of advanced engineering design means, the reliability and stability of products are effectively guaranteed in the light mechanical thermal integration analysis, automatic electronic control system development, etc. This series of products are widely used in lidar systems such as Doppler lidar, laser debris observation, laser remote sensing, etc., with the following technical advantages.

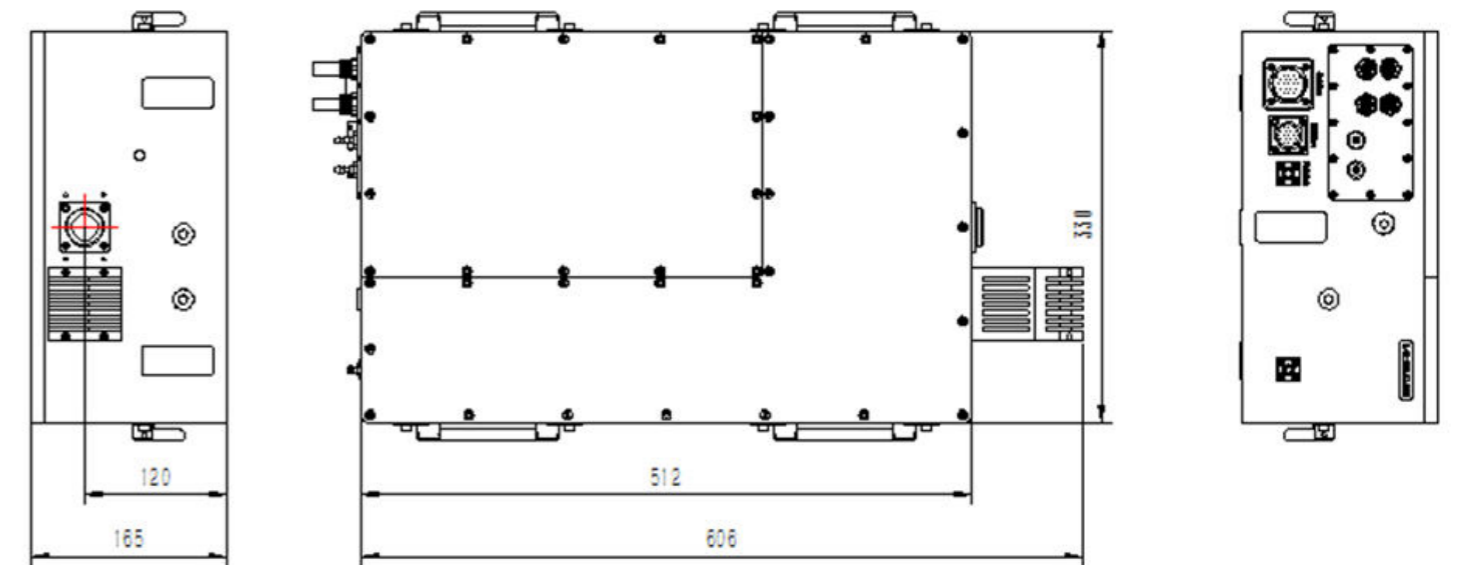
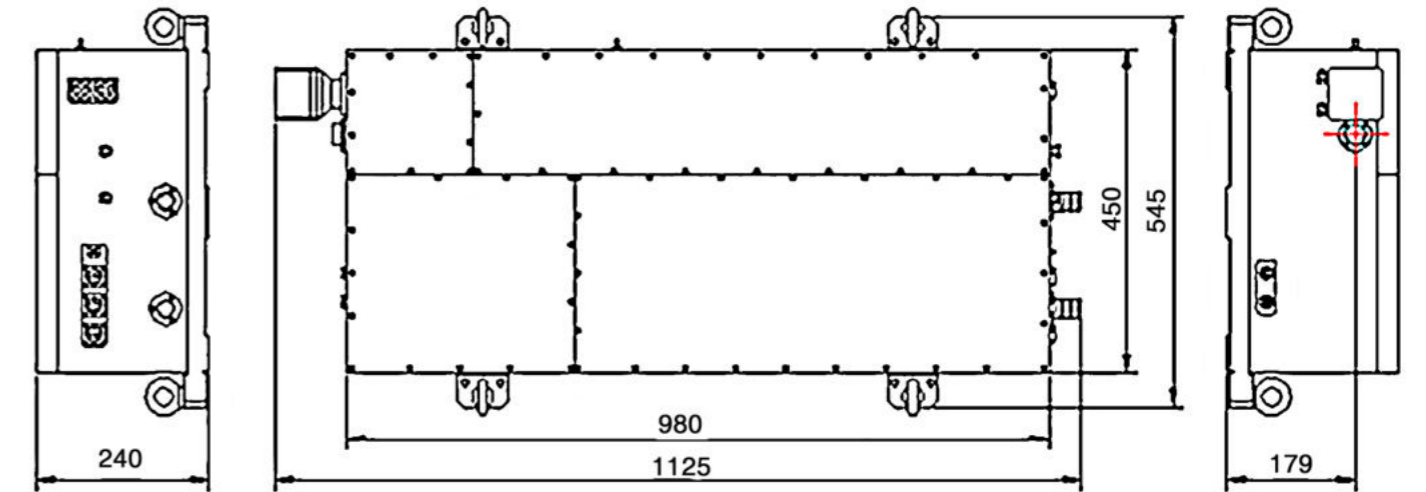
FEATURES

- Narrow line width
- High stability
- Tunable
- Compact structure, ideal for OEM applications

APPLICATIONS

- Doppler wind measurement
- Satellite laser ranging
- Underwater imaging
- Laser fine drilling

OUTLINE SIZE(mm)



PARAMETERS

Model	CL532-50mJ-SSL005	CL532-150mJ-SSL006	CL532-250mJ-SSL007	CL532-400mJ-SSL008	CL532-50mJ-SLL005	CL532-150mJ-SLL006	CL532-250mJ-SLL007	CL532-400mJ-SLL008	
Optical Parameter	Energy @532nm (mJ)	50	150	250	400	50	150	250	400
	Energy Stability	<2%	<2.5%	<3%	<3%	<2%	<2.5%	<3%	<3%
	Pulse Width (ns)	<10	<10	<10	<10	<10	<10	<10	<10
	Repeat Frequency (Hz)	1-200	1-200	1-200	1-200	1-20	1-20	1-20	1-20
	Beam Quality M ²	<2	<2	<3	<3	<2	<2	<3	<3
	Beam Divergence angle	<1	<1	<1	<1	<1	<1	<1	<1
	Spot Diameter (1/e ²)	~3	~4.5	~6	~8	~3	~4.5	~6	~8
Function Parameter	Horizontal Mode	TEM00	TEM00	TEM00	TEM00	TEM00	TEM00	TEM00	TEM00
	Power Supply	AC 380 V, 15 A	AC 380 V, 15 A	AC 380 V, 15 A	AC 380 V, 15 A	AC220 V	AC220 V	AC220 V	AC220 V
	Longitudinal Mold	Single longitudinal mode							
	Cooling Method	Water Cooling							
Environmental Requirements	Operating Temperature (°C)	15 ~ 30	15 ~ 30	15 ~ 30	15 ~ 30	0 ~ 35	0 ~ 35	0 ~ 35	0 ~ 35
	Storage Temperature (°C)	-10 ~ +50	-10 ~ +50	-10 ~ +50	-10 ~ +50	-10 ~ +50	-10 ~ +50	-10 ~ +50	-10 ~ +50
	Humidity	0-70%	0-70%	0-70%	0-70%	0-70%	0-70%	0-70%	0-70%
Weight and Size	Laser Head Weight (Kg)	<120	<150	<180	<200	<50	<80	<100	<100
	Electric Control Cabinet Weight (Kg)	<50	<50	<50	<50	<100	<100	<100	<100
	Water Cooler Weight (Kg)	<100	<100	<100	<100	<50	<50	<50	<50
	Laser Head Size	900*450*240	1125*450*240	1500*500*240	2000*500*240	512*350*165	600*350*165	650*350*165	800*350*165
	Electrical Control Cabinet Size	15U	15U	15U	15U	6U	9U	9U	12U
	Water Cooler Size	800*800*1200	800*800*1200	800*800*1200	800*800*1200	5U	5U	10U	10U

