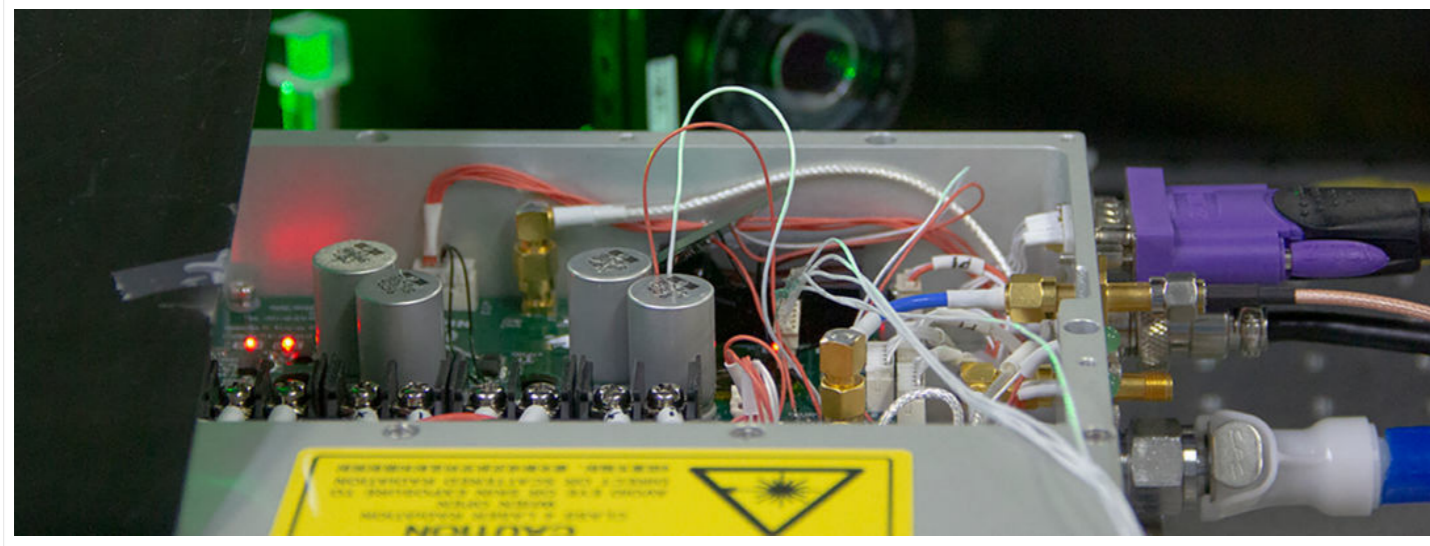


# 355nm Single Frequency Solid State Laser



## DESCRIPTION

The single frequency series laser includes single frequency continuous seed source, single frequency continuous amplification + frequency multiplier, single frequency high energy solid-state laser. Based on the non planar ring cavity technology, resonance detection technology, external cavity resonance frequency doubling technology and other engineering technology, the full parameter multi band laser product coverage from narrow linewidth seed source, excitation amplification to nonlinear frequency conversion is realized. By means of advanced engineering design means, the reliability and stability of products are effectively guaranteed in the light mechanical thermal integration analysis, automatic electronic control system development, etc. This series of products are widely used in lidar systems such as Doppler lidar, laser debris observation, laser remote sensing, etc., with the following technical advantages.

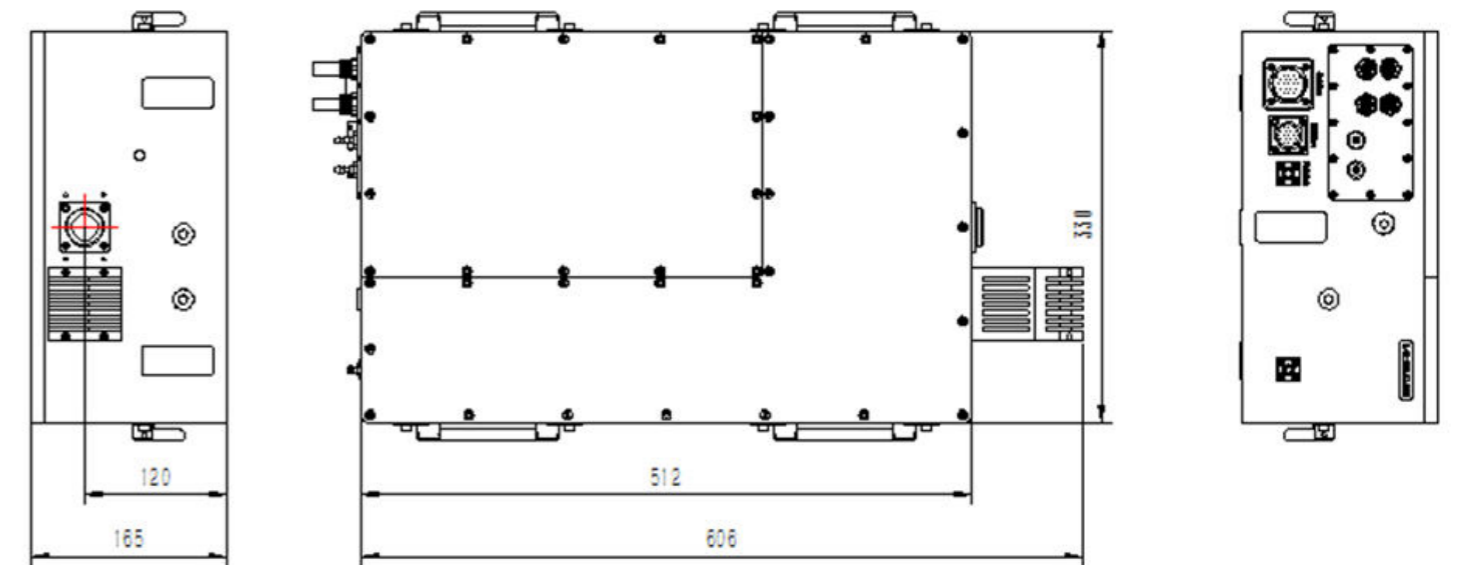
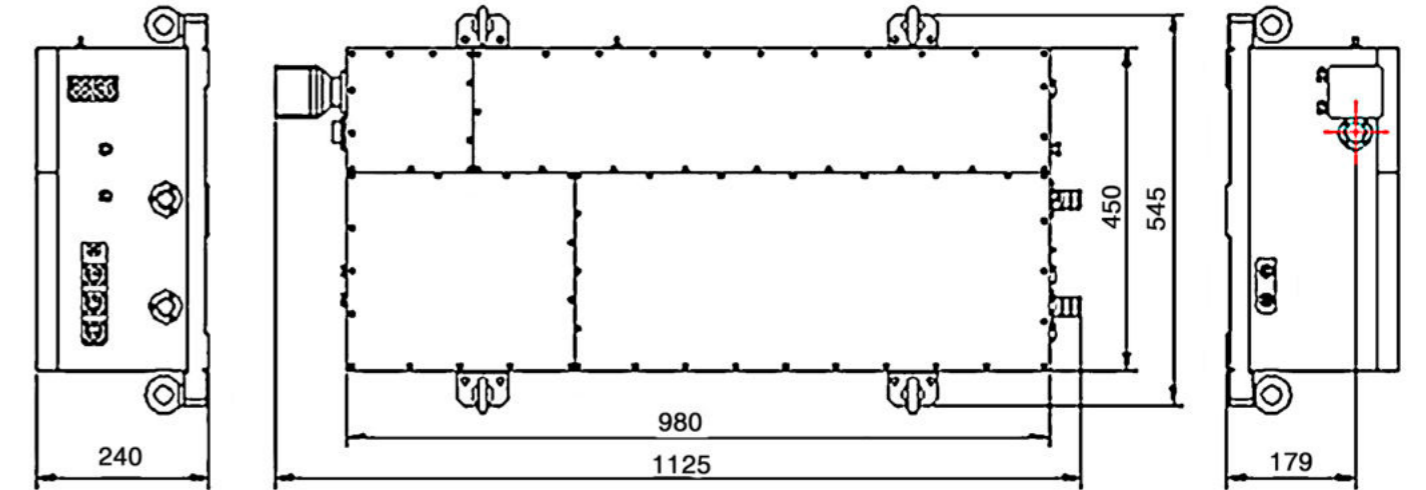
## FEATURES

- Narrow line width
- High stability
- Tunable
- Compact structure, ideal for OEM applications

## APPLICATIONS

- Coherent optical communication
- Laser seed source
- Coherent lidar
- Ranging
- Remote sensing
- Laser spectroscopy

## OUTLINE SIZE(mm)



## PARAMETERS

Model	CL355-30mJ-SSL001	CL355-90mJ-SSL002	CL355-150mJ-SSL003	CL355-240mJ-SSL004	CL355-30mJ-SLL001	CL355-90mJ-SLL002	CL355-150mJ-SLL003	CL355-240mJ-SLL004	
Optical Parameter	Energy @355nm (mJ)	30	90	150	240	30	90	150	240
	Energy Stability	<2%	<2.5%	<3%	<3%	<2%	<2.5%	<3%	<3%
	Pulse Width (ns)	<10	<10	<10	<10	<10	<10	<10	<10
	Repeat Frequency (Hz)	1-200	1-200	1-200	1-200	1-20	1-20	1-20	1-20
	Beam Quality M <sup>2</sup>	<2	<2	<3	<3	<2	<2	<3	<3
	Beam Divergence angle	<1	<1	<1	<1	<1	<1	<1	<1
	Spot Diameter ( 1/e <sup>2</sup> )	~3	~4.5	~6	~8	~3	~4.5	~6	~8
Function Parameter	Horizontal Mode	TEM <sub>00</sub>	TEM <sub>00</sub>	TEM <sub>00</sub>	TEM <sub>00</sub>	TEM <sub>00</sub>	TEM <sub>00</sub>	TEM <sub>00</sub>	TEM <sub>00</sub>
	Longitudinal Mold	Single longitudinal mode	Single longitudinal mode	Single longitudinal mode	Single longitudinal mode	Single longitudinal mode	Single longitudinal mode	Single longitudinal mode	Single longitudinal mode
	Cooling Method	Water cooling	Water cooling	Water cooling	Water cooling	Water cooling	Water cooling	Water cooling	Water cooling
	Power Supply	AC 380 V, 15 A	AC 380 V, 15 A	AC 380 V, 15 A	AC 380 V, 15 A	AC220 V	AC220 V	AC220 V	AC220 V
Environmental Requirements	Operating Temperature (°C)	15 ~ 30	15 ~ 30	15 ~ 30	15 ~ 30	0 ~ 35	0 ~ 35	0 ~ 35	0 ~ 35
	Storage Temperature (°C)	-10 ~ +50	-10 ~ +50	-10 ~ +50	-10 ~ +50	-10 ~ +50	-10 ~ +50	-10 ~ +50	-10 ~ +50
	Humidity	0-70%	0-70%	0-70%	0-70%	0-70%	0-70%	0-70%	0-70%
Weight and Size	Laser Head Weight (Kg)	<120	<150	<180	<200	<50	<80	<100	<100
	Electric Control Cabinet Weight (Kg)	<50	<50	<50	<50	<100	<100	<100	<100
	Water Cooler Weight (Kg)	<100	<100	<100	<100	<50	<50	<50	<50
	Laser Head Size	900*450*240	1125*450*240	1500*500*240	2000*500*240	512*350*165	600*350*165	650*350*165	800*350*165
	Electrical Control Cabinet Size	15U	15U	15U	15U	6U	9U	9U	12U
	Water Cooler Size	800*800*1200	800*800*1200	800*800*1200	800*800*1200	5U	5U	10U	10U

