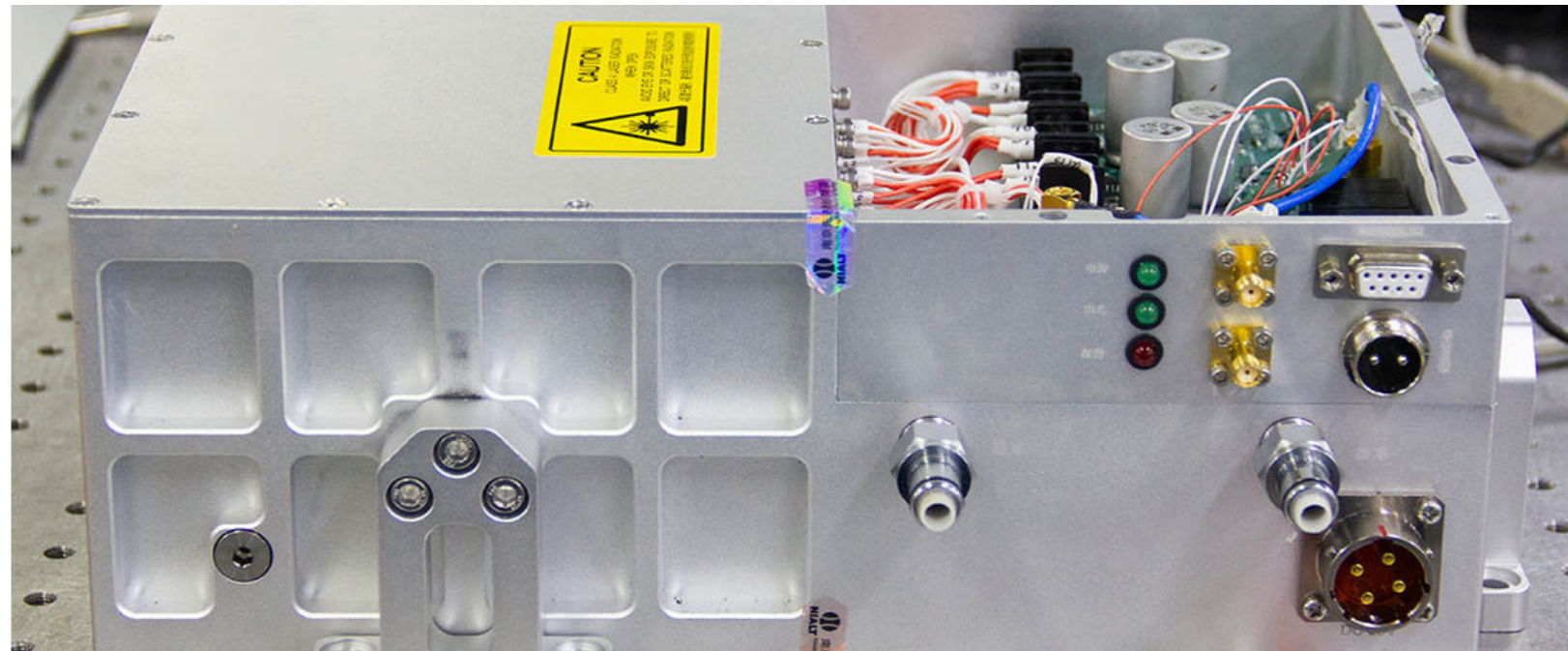
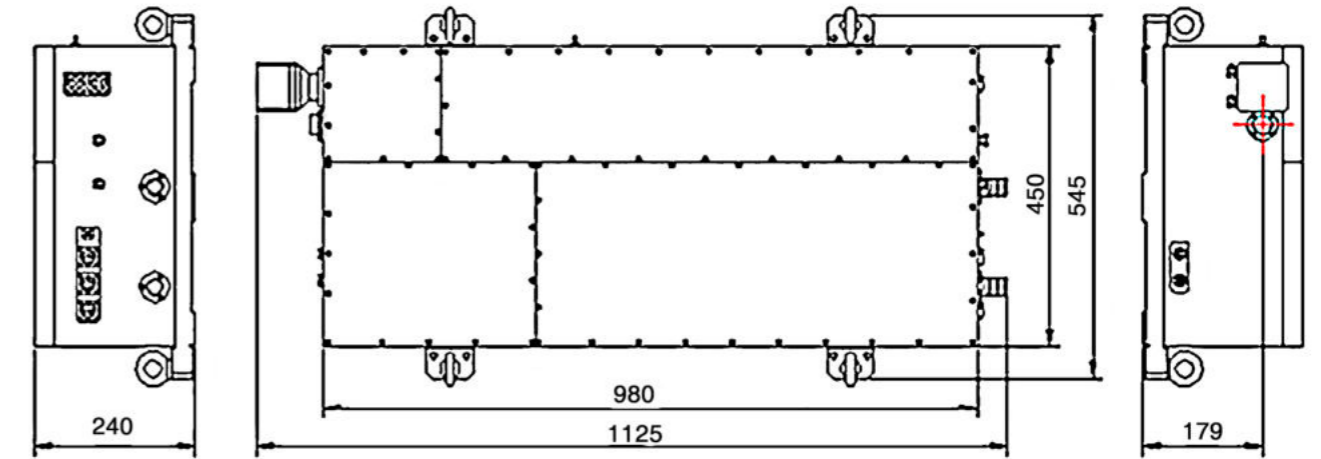


1064nm Single Frequency Pulsed Solid State Laser



OUTLINE SIZE(mm)



DESCRIPTION

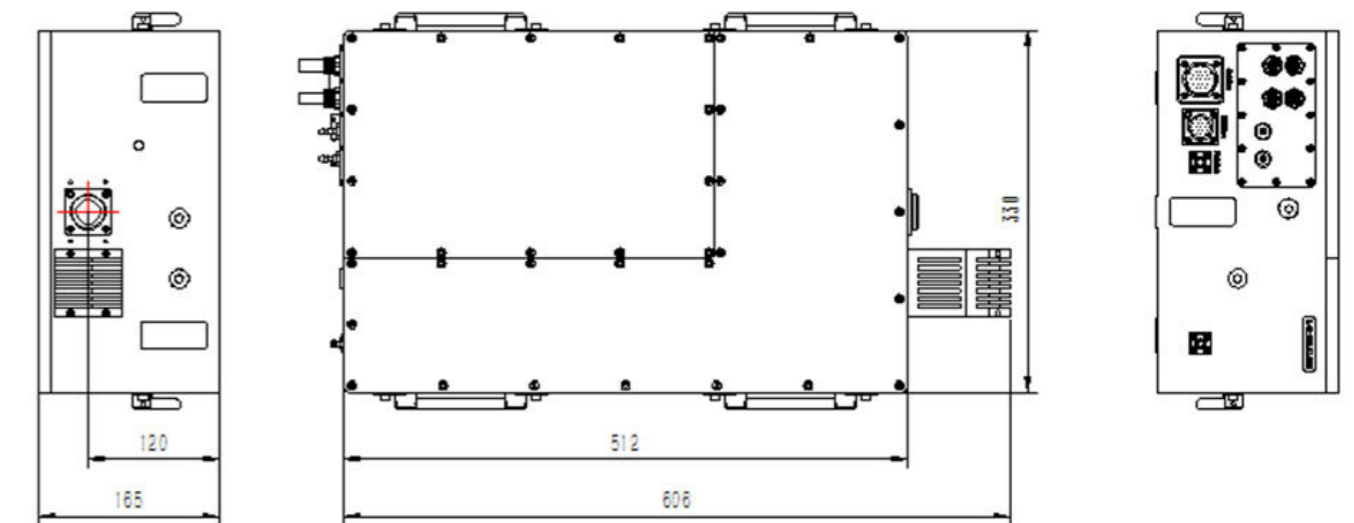
The single frequency series laser includes single frequency continuous seed source, single frequency continuous amplification + frequency multiplier, single frequency high energy solid-state laser. Based on the non planar ring cavity technology, resonance detection technology, external cavity resonance frequency doubling technology and other engineering technology, the full parameter multi band laser product coverage from narrow linewidth seed source, excitation amplification to nonlinear frequency conversion is realized. By means of advanced engineering design means, the reliability and stability of products are effectively guaranteed in the light mechanical thermal integration analysis, automatic electronic control system development, etc. This series of products are widely used in lidar systems such as Doppler lidar, laser debris observation, laser remote sensing, etc., with the following technical advantages.

FEATURES

- Single-mode output, good beam quality
- Light pump output, high cost performance
- Reliable structure, permanent fixing technology
- Highly integrated system, easy to operate

APPLICATIONS

- Satellite laser ranging
- Doppler wind measurement
- Underwater imaging
- Nonlinear frequency conversion
- Laser fine drilling



PARAMETERS

Model	CL1064-100mJ-SSL009	CL1064-300mJ-SSL010	CL1064-500mJ-SSL011	CL1064-800mJ-SSL012	CL1064-300mJ-SLL009	CL1064-500mJ-SLL010	CL1064-800mJ-SLL011	CL1064-1000mJ-SLL012	
Optical Parameter	Energy @1064nm (mJ)	100	300	500	800	300	500	800	1000
	Energy Stability	< 2%	< 2.5%	< 3%	< 3%	< 2%	< 2.5%	< 3%	< 3%
	Pulse Width (ns)	<10	<10	<10	<10	<10	<10	<10	<10
	Repeat Frequency (Hz)	1-200	1-200	1-200	1-200	1-20	1-20	1-20	1-20
	Beam Quality M ²	< 2	< 2	< 3	< 3	< 2	< 2	< 3	< 3
	Beam Divergence angle	< 1	< 1	< 1	< 1	< 1	< 1	< 1	< 1
	Spot Diameter (1/e ²)	~ 3	~ 4.5	~ 6	~ 8	~ 3	~ 4.5	~ 6	~ 8
Function Parameter	Horizontal Mode	TEM ₀₀	TEM ₀₀	TEM ₀₀	TEM ₀₀	TEM ₀₀	TEM ₀₀	TEM ₀₀	TEM ₀₀
	Longitudinal Mold	Single longitudinal mode	Single longitudinal mode	Single longitudinal mode	Single longitudinal mode	Single longitudinal mode	Single longitudinal mode	Single longitudinal mode	Single longitudinal mode
	Cooling Method	Water cooling	Water cooling	Water cooling	Water cooling	Water cooling	Water cooling	Water cooling	Water cooling
	Power Supply	AC 380 V, 15 A	AC 380 V, 15 A	AC 380 V, 15 A	AC 380 V, 15 A	AC220 V	AC220 V	AC220 V	AC220 V
Environmental Requirements	Operating Temperature (°C)	15-30	15-30	15-30	15-30	0-35	0-35	0-35	0-35
	Storage Temperature (°C)	-10 ~ +50	-10 ~ +50	-10 ~ +50	-10 ~ +50	-10 ~ +50	-10 ~ +50	-10 ~ +50	-10 ~ +50
	Humidity	0-70%	0-70%	0-70%	0-70%	0-70%	0-70%	0-70%	0-70%
Weight and Size	Laser Head Weight (Kg)	<120	<150	<180	<200	< 50kg	< 80kg	< 100kg	< 100kg
	Electric Control Cabinet Weight (Kg)	< 50kg	< 50kg	< 50kg	< 50kg	< 100kg	< 100kg	< 100kg	< 100kg
	Water Cooler Weight (Kg)	< 100kg	< 100kg	< 100kg	< 100kg	< 50kg	< 50kg	< 50kg	< 50kg
	Laser Head Size	900*450*240	1125*450*240	1500*500*240	2000*500*240	512*350*165	600*350*165	650*350*165	800*350*165
	Electrical Control Cabinet Size	15U	15U	15U	15U	6U	9U	9U	12U
	Water Cooler Size	800*800*1200	800*800*1200	800*800*1200	800*800*1200	5U	5U	10U	10U

